



GEP EXAMS FRAMEWORK



DESCRIPTION



GEP (Global English Proficiency) English Exams is a line of levelled English proficiency exams designed strictly under the guidelines of the Common European Framework of Reference for languages. Each GEP English online examination is designed for easy deployment at educational institutions and organizations around the world.



TARGET AUDIENCE



GEP English Exams is designed for academic institutions, companies or language institutes that wish to test proficiency level of their students at every step of their English language learning process. The intended candidates are children and young people, usually in primary, secondary or university, and / or adults who use English as a second language or as a foreign language as part of their studies to develop their skills and improve their knowledge of a wide range of thematic areas.



CEFR ALIGNMENT

Since all GEP Exams were developed from the ground up following the standards of the Common European Framework of Reference for Languages, there is a one-to-one correlation between CEFR and GEP levels.



GEP ENGLISH EXAM SKILLS



All GEP English Exams measure 3 main components of the English language learning process:

Reading, Listening and Language use.

(Skills tested in Young Learners)



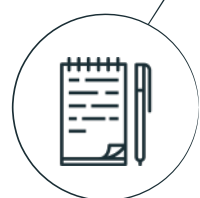
Reading



Listening



Language use



Writing



Speaking

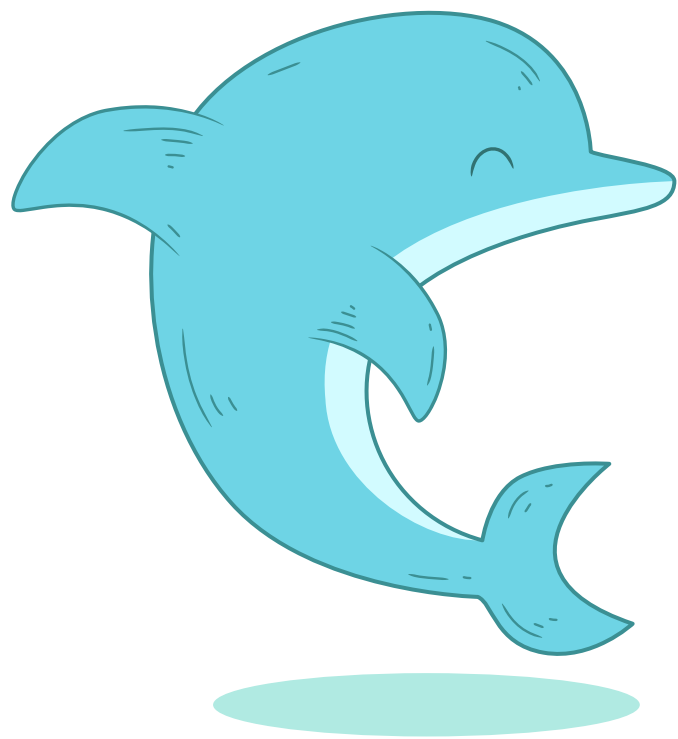
From CEFR level A1 and on, two additional optional components are offered.

Reading, Listening, Language use, Writing and Speaking.

Skills tested in levels
GEP A1 English exam
GEP A2 English exam
GEP B1 English exam
GEP B2 English exam
GEP C1 English exam

YOUNG LEARNERS

DOLPHINS (PRE A1-1)



5 TO 6 YEARS OLD

Children who take the Dolphins Exam are able to understand simple expressions in the simple present, as well as numbers, descriptions and familiar words in their immediate surroundings.

BEARS (PRE A1-2)



7 TO 8 YEARS OLD

Bears Exam students can understand characteristics of people and places in their familiar surroundings, as well as initiate and respond to simple statements in areas of immediate need or on very familiar topics.

LIONS (PRE A1-3)



9 TO 10 YEARS OLD

Students are able to understand simple, standard speech in the simple present tense and recognize familiar words and basic phrases concerning themselves, their family and immediate concrete surroundings.

GEP ENGLISH EXAM LEVELS



BASIC USER (A1)



The GEP A1 Exam tests the learner's ability to interact in a simple way, ask and answer simple questions about themselves, where they live, people they know, and things they have.

The GEP B1 also examines the student's ability to cope with problems in everyday life, for example, routine situations on public transport arising when travelling.

BASIC USER(A2)



The GEP A2 Exam determines the student's listening ability to understand phrases and expressions related to areas of immediate priority

The GEP A2 also tests a student's capacity to generally identify the topic of discussion around him and his ability to recognise when speakers agree and disagree in a conversation.

INDEPENDENT USER (B1)



The GEP B1 Exam tests the student's ability to maintain interactions with speakers and getting across what they want in various scenarios, following the main points of extended discussions around them and expressing their main ideas comprehensively. Also examines the student's ability to cope with problems in everyday life.

GEP ENGLISH EXAM LEVELS



INDEPENDENT USER (B2)



The GEP B2 Exam tests the capacity of the students to understand standard spoken language on both familiar and unfamiliar topics normally encountered in personal, social, academic or vocational life.

The GEP B2 Exam also probes the ability of the student to understand the main ideas of linguistically complex speech on both concrete and abstract topic

PROFICIENT USER (C1)



The GEP C1 Exam tests the students' ability to understand and follow extended speech on abstract or complex topics as well as recognize a wide range of idiomatic expressions and colloquialisms.

INTERNATIONAL ACCREDITATION



GEP Exams are accredited by Gatehouse Awards Limited, United Kingdom. Gatehouse Awards is an Awarding Organisation recognised by Ofqual, the Office of Qualifications and Examinations Regulation (Ofqual), which regulates qualifications, examinations and assessments in England, and by a number of recognition bodies worldwide.



GEP EXAMS FORMATS AND SCORING



GEP A1 TO C1 ENGLISH EXAMS

Receptive components.

The Listening, Reading and Language Use components, are graded within our Testing platform. The system automatically grades over 100 points based on the number of correct questions per section

Productive components

Human examiners trained and accredited by Global Language Training, qualify the speaking and writing components. The score over 100 is determined by following the following rubrics designed from the performance standards for each level of the CEFR.

GEP YOUNG LEARNERS ENGLISH EXAMS

Test results are reported using badges for each section (Language Use, Reading, and Listening). The certificate shows how many badges the child has received for each section, with a maximum of five badges for each paper and 15 badges in total. A test result of one (1) badge indicates that a child can improve a lot in that skill. A test result of five (5) badges means that a child did very well in that skill and answered most questions correctly.



GEP EXAMS FORMATS AND SCORING



The result is granted according to the following scales:

- 69 or less: Does not pass
- 70-79: Pass
- 80-89: Pass with Merit
- 90-100: Pass with Distinction



VALIDITY INDEX



Since its first development GEP English Exam pilot tests have been administered all over the world. The evaluation instrument measuring the English competence of the candidates has been the GEP English Exams evaluation system, which evaluates: Listening, Reading, Language use, speaking and writing.

The validation process has involved the accumulation of evidence to provide a solid scientific basis for the interpretation of the proposed results. The evidence has been based on the content of the exam, the response processes, the internal structure, the relationships with other variables, data triangulation and the consequences of the tests (AERA, APA and SNEM, 1999).

To analyze the validity and internal consistency of the exam, students from various educational institutions worldwide took it in different sessions, each of which lasted between 120 minutes and 180 minutes. The validity of the results was analyzed through the use of the different methods aforementioned.

The results of the exam content analysis show an adequate alignment between the exam and the CEFR levels. These results prove that there is a total alignment between the Exams GEP and the linguistic capabilities defined for each level of the CEFR, yielding a very high validity index.



RELIABILITY INDEX



Several types of evidence have been presented on the reliability of the Exams GEP throughout their development. By analyzing them in their entirety, and appropriate inferences made based on the pilot exam results, on the CEFR levels and on the general English language skills evaluated. Therefore, we find that GEP English Exams achieve a high reliability index.

Additionally, the construct is well represented in the exam. That is, the construct

includes all relevant aspects from the CEFR related to general language skills in English such as listening comprehension, reading comprehension, speaking and writing, and the language use test covers all relevant aspects.

Based on the evidence gathered, GEP English Exams are totally reliable to determine the different levels of CEFR and to give information about the general English language skills of the candidates.





WWW.ITESTENGLISH.COM

Email: info@globaltefl.uk.com

LONDON

20-22 Wenlock Road
London N1 7GU, England
Tel +44-0203-435-6821

NEW YORK

17 State Street Suite 400
New York, NY 10004. USA.
Tel +1-646-6882927